



 **focus**
FY14 ANNUAL REPORT

LAUNCHED INTO MISSION

A LOOK INSIDE

- //02 LETTER FROM THE FOUNDER & CEO
- //03 WHERE WE SERVE
- //05 MISSIONS
- //07 VARSITY CATHOLIC
- //09 FOCUS GREEK
- //11 FOCUS ONLINE
- //13 ALUMNI SPOTLIGHTS
- //15 OUR MISSIONARIES
- //41 FINANCIALS
- //42 WHAT IS THE COST?
- //43 WHY IT'S POSSIBLE
- //46 BOARD OF DIRECTORS

Bovard Hall at the University of Southern California, where FOCUS missionaries began serving in 2013





THE MAIN THING:

Inviting college students into a growing relationship with Jesus Christ and His Church; inspiring and equipping them for a lifetime of Christ-centered evangelization, discipleship, and friendships in which they lead others to do the same.

FOCUS IS LAUNCHING COLLEGE STUDENTS INTO MISSION ON CAMPUS—AND BEYOND.

LETTER FROM THE FOUNDER & CEO

“Love one another, even as I have loved you.” —John 13:34



With these words, Jesus instructs us how we ought to live. As we begin our 16th year of continual growth, I am so grateful that our “success” has not caused us to become distracted. Indeed, FOCUS has experienced remarkable increase—from two part-time staff to more than 500 full-time staff, from 24 students to tens of thousands of students and alumni. In the midst of all of our activities, our leadership team came to me and urged me to keep our call to love as Jesus loved us at the center of our work. Our rallying cry this year—“Love one another”—is a reminder of why we do what we do. We love one another, as Christ loved us.

We love college students, even when they may not yet be engaged in their faith; we go where they go, we do what they love to do (at least those things that are legal and moral). Why? Because that is the way Christ loved: inviting others into friendship and spending time with them. As these friendships deepen into openness to faith in Christ, we invite the young leaders of our world to encounter Him personally. If they choose to place Jesus Christ at the center of their lives, we teach them how to love others as Jesus loved them. This is what we do.

This young generation needs to know that they were made for more. So many have been distracted, deceived, and derailed by our postmodern, godless culture. Each of them is looking for lasting happiness and significance in a world that offers false hope in the unbridled pursuit of pleasure. If they knew the truth about themselves, they would be transformed. We see it as our mission to share the truth, as seen through the eyes of Jesus, with as many college students as we can.

We would not be where we are today if it were not for the rich blessings of God. One of the greatest of these gifts has been the high caliber of young people with whom we have been privileged to collaborate. Another is the generous support of our benefactors; through your partnership, God is changing lives. I have no doubt that you grasp the tremendous need for FOCUS on college campuses. Nowhere else in our society are young people gathered the way they are at universities. The future of our civilization passes through their minds, hearts, and hands. However, I also realize your need for assurance that FOCUS is a good steward of your giving. This Annual Report is our response to the question: Is FOCUS making the best use of your generosity that we can?

I hope that you will review our annual report as a testimony of the abundant grace of God made manifest through the significant impact of our work—as well as our fierce determination to utilize, with great efficiency, the resources God has given to us through you.

Thank you for your partnership in mission. The future is worth the investment.

Sincerely in Christ,

A handwritten signature in black ink that reads "Curtis A. Martin". The signature is written in a cursive, flowing style.

Curtis A. Martin
Founder & Chief Executive

Curtis talks with Pope Francis at “The Pastoral Project of Evangelii Gaudium” gathering at the Vatican.



2014–2015 CAMPUSES

ALABAMA

Auburn University, Auburn
*University of South Alabama, Mobile
*Troy University, Troy
*University of Alabama, Birmingham

ARIZONA

Arizona State University, Tempe
Northern Arizona University, Flagstaff

CALIFORNIA

University of California, Berkeley
University of Southern California, Los Angeles
University of California, Santa Barbara
*California State University, Fullerton
*San Diego State University, San Diego

COLORADO

University of Colorado, Boulder
Colorado State University, Ft. Collins
Colorado School of Mines, Golden
University of Northern Colorado, Greeley

CONNECTICUT

University of Connecticut, Storrs
U.S. Coast Guard Academy, New London
*Western Connecticut State University, Danbury

FLORIDA

Ave Maria University, Ave Maria
University of Florida, Gainesville
*University of North Florida, Jacksonville
*Florida Atlantic University, Boca Raton

GEORGIA

Georgia Southern University, Statesboro
Georgia Tech, Atlanta
*Georgia College & State University, Milledgeville

ILLINOIS

University of Illinois, Chicago
University of Illinois, Urbana–Champaign
Northwestern University, Chicago

IOWA

Drake University, Des Moines
Loras College, Dubuque

INDIANA

Ball State University, Muncie
Indiana University–Purdue University, Indianapolis

KANSAS

Benedictine College, Atchison
University of Kansas, Lawrence

KENTUCKY

University of Kentucky, Lexington
Murray State University, Murray

Check out our interactive map at:
focus.org/campuses

LOUISIANA

University of Louisiana, Lafayette
Tulane University, New Orleans

MARYLAND

Mount St. Mary's University, Emmitsburg
United States Naval Academy, Annapolis
University of Maryland, College Park

MASSACHUSETTS

Boston University, Boston
Massachusetts Institute of Technology, Cambridge
Harvard University, Boston

MAINE

*University of Maine, Orono

MICHIGAN

Eastern Michigan University, Ypsilanti
*Central Michigan University, Mt. Pleasant
*Michigan Technological University, Houghton

MINNESOTA

University of Minnesota, Duluth
Minnesota State University, Mankato
Winona State University, Winona
*St. John's University, Collegeville

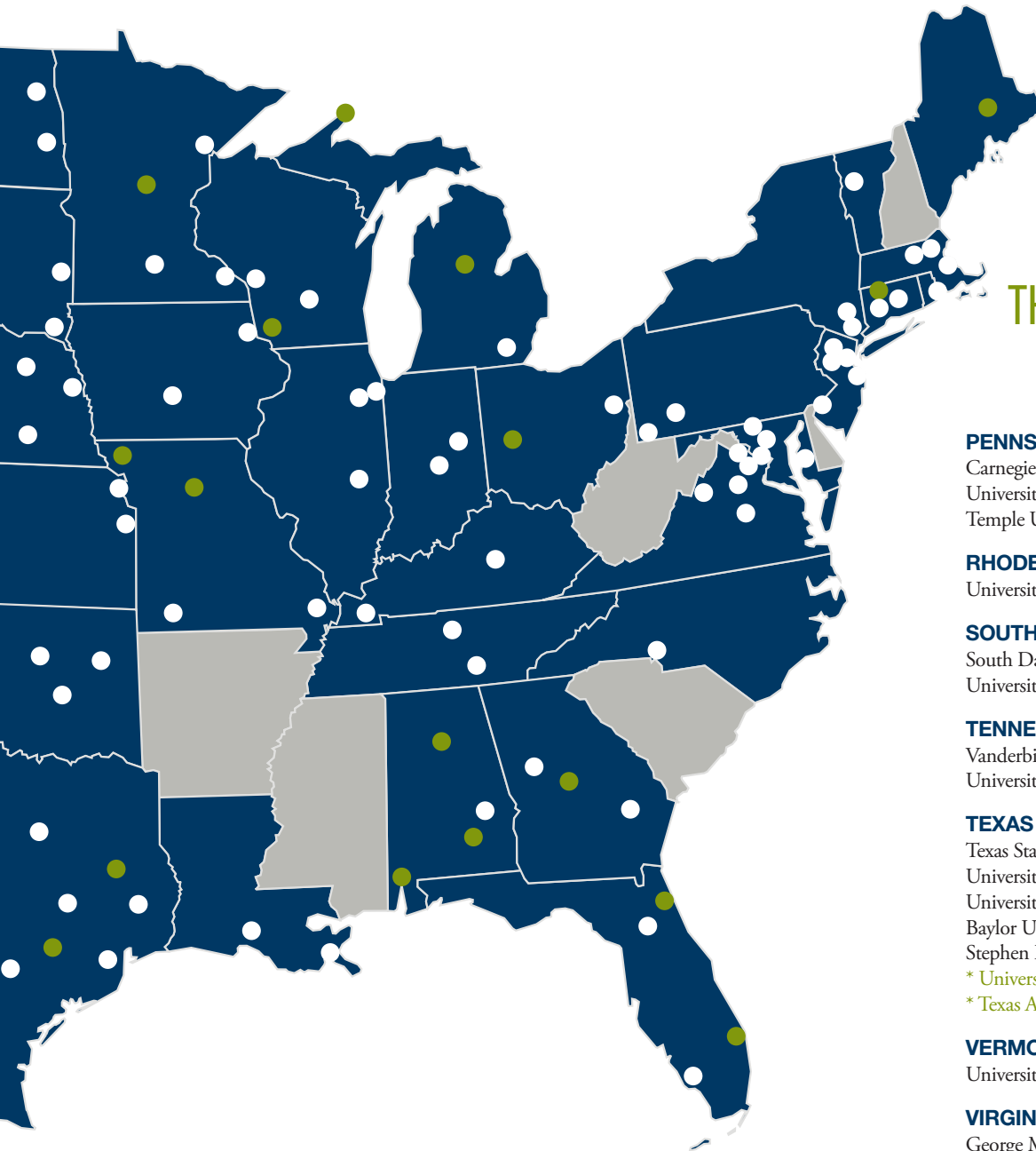
MISSOURI

Missouri State University, Springfield
Southeast Missouri State University, Cape Girardeau
*University of Missouri, Columbia
*Northwest Missouri State University, Maryville

NEBRASKA

University of Nebraska, Lincoln
University of Nebraska, Omaha
Wayne State College, Wayne

THANKS TO LOYAL
FRIENDS, FOCUS
WILL HAVE A
PRESENCE ON
100 CAMPUSES
THIS ACADEMIC YEAR



NEW JERSEY

Seton Hall University, South Orange
Ramapo College, Mahwah
Montclair State University, Montclair
Farleigh Dickinson University, Madison

NEW YORK

Columbia University, New York City
New York University, New York City

NORTH CAROLINA

Belmont Abbey College, Belmont

NORTH DAKOTA

North Dakota State University, Fargo
University of Mary, Bismarck
University of North Dakota, Grand Forks

OHIO

Franciscan University, Steubenville
* Wright State University, Dayton

OKLAHOMA

University of Tulsa, Tulsa
University of Oklahoma, Norman
Oklahoma State University, Stillwater

PENNSYLVANIA

Carnegie Mellon University, Pittsburgh
University of Pittsburgh, Pittsburgh
Temple University, Philadelphia

RHODE ISLAND

University of Rhode Island, Kingston

SOUTH DAKOTA

South Dakota State University, Brookings
University of South Dakota, Vermillion

TENNESSEE

Vanderbilt University, Nashville
University of Tennessee, Knoxville

TEXAS

Texas State University, San Marcos
University of Texas, Austin
University of North Texas, Denton
Baylor University, Waco
Stephen F. Austin State University, Nacogdoches
* University of Texas, Tyler
* Texas A&M University, College Station

VERMONT

University of Vermont, Burlington

VIRGINIA

George Mason University, Fairfax
James Madison University, Harrisonburg
University of Virginia, Charlottesville
University of Mary Washington, Fredericksburg

WISCONSIN

University of Wisconsin, Madison
University of Wisconsin, La Crosse
* University of Wisconsin, Platteville

DISTRICT OF COLUMBIA

George Washington University, Washington, D.C.

* Denotes new campus for 2014–2015
** See all FOCUS missionaries on pages 15–40
*** See www.focus.org for expansion updates



LESS IS MORE: A LESSON ON SELFLESS LOVE

BY JORDAN TEWES

As I was on a plane from Arizona to New York to meet a handful of complete strangers, I had no idea that this group of people would become lifelong friends. This group of 25, both missionaries and students who served alongside me in Daule, Ecuador, were vastly different from one another: A few of the women were discerning religious life, while several of the students attended the United States Naval Academy.

Despite our differences, God graced us with the ability to embrace one another, though complete strangers, with a selfless and generous love. As beautifully stated by FOCUS missionary Stephanie, “Here in Ecuador we can’t hide behind anything—our phone, our relationships, our school work, etc. When we can’t hide, we simply become human,” and that is exactly what we did. Stripped of distractions, selfishness, and the



Jordan Tewes,
junior at Arizona
State University, on
mission in Ecuador



busyness of life, we truly became human—humans who were made to love, humans who were made to give, and humans who were made to serve.

Daule was both gorgeous and very impoverished. Before arriving in this little city, I had no idea that people in other parts of the world actually live in bamboo huts, have little to eat, and lack the water necessary to quench their thirst. We lived in solidarity with the locals, so we too experienced this degree of poverty. The people of Daule have so little, yet they served us in every way they knew how. I remember sitting in a woman’s home that was built on stilts and the size of my living room. She invited ten of us in, insisted that we sit on her bed and around her kitchen, and served us every type of cracker, cheese, and fruit she had. I remember thinking that, by the world’s standard, this woman had nothing, yet she gave everything she had with the greatest generosity and joy that I had ever seen.

Following the example of the Ecuadorians, my brother and sister missionaries reciprocated the locals’ generosity as we learned to serve

In March, FOCUS sent 19 students, 5 missionaries, and 1 priest to Ecuador



medicine I had to those who felt ill, and sharing my sleeping bag with three other women.

MY LIFE HAS RADICALLY CHANGED SINCE RETURNING FROM ECUADOR.

Although I have experienced unconditional and selfless love throughout my entire life, I had never known how to reciprocate it. Experiencing the true generosity of the Ecuadorians and the selflessness of my fellow missionaries taught me how to find great joy in giving. My life has radically changed since returning from Ecuador. I am better equipped to serve my younger sisters, my parents, my peers, and my future spouse. I am thankful for the opportunity I had to witness, receive, and now reciprocate an unconditional, self-denying, and relentless love.

one another. For example, when water was scarce, Kelsie would distribute what little water she had left to others to ensure no one was left thirsty; when we ran out of clean plates, Andrea and I would share a meal on the same plate. I too experienced great joy in giving what I had by handing out my protein bars when others were hungry, giving the

MISSIONS AT A GLANCE

- 41 total trips
- 24 countries
- 500 student participants

AFTER THEIR EXPERIENCE ON MISSION:

- On average, 2 college students **per trip** decided to apply to become FOCUS missionaries
- 5 decided to enter the seminary or religious life
- 35% said Christ was at the center of their life before mission, as opposed to 82% by the end of mission
- Hundreds of people around the world experienced the witness of faithful young Catholics who want to make a difference



VARSITY CATHOLIC AT A GLANCE

- 25 full-time staff on 16 campuses
- 58 part-time staff on 42 additional campuses
- 700 athletes in Bible studies
- 150 student athlete leaders

Linda Del Rio, Executive Consultant to Varsity Catholic, presents a football signed by the Denver Broncos to Pope Francis



DEVELOPING ATHLETES WHO CHANGE THE WORLD

BY FRANK PEHLKE

My name is Frank, and I am currently a sophomore football player at Loras College. I encountered FOCUS on Loras’ campus a number of times over the past few years, but my faith wasn’t something I wanted to understand or be a part of. That all changed when I met Shaun, a Varsity Catholic missionary with FOCUS.

During our bye week, I had gotten into a fairly serious fight and was in a great deal of trouble with the school and my coaches. It wasn’t until then that I realized I needed to make some changes. My teammate knew my situation and where I was in my faith life, and he asked if I wanted to join him for one of Shaun’s talks. Agreeing to attend that talk was one of the best decisions I had made in a very long time.

Shaun immediately took me under his wing and was able to understand me on a deeper level. He always managed to incorporate faith and the Bible into each one of our conversations in practical ways that I was able to understand and relate to. Ever since that first meeting, Shaun and I have met at least once a week. He helped me throughout the trouble following my altercation earlier in the semester and helped me grow in my faith in ways I didn’t even know were possible.

A huge growing point came when Shaun invited me to the Student Leadership Summit in January. This experience changed my mindset entirely and helped me get more involved in my faith and on campus. Since that time, I have become a member of Loras College’s CORE team and entered into discipleship with Shaun, seeking to become a leader for my peers.

SHAUN MADE A LASTING IMPACT IN MY LIFE AND SHOWED ME WHAT IT MEANS TO BE A TRUE MAN OF CHRIST.

To be entirely honest, if it weren’t for Shaun, I don’t know if I would have been able to make the changes in my life that I have made over the past school year. He was always “real” with me and told me what I needed to hear. He had been in a similar situation once and was able to use his own experiences to help guide me in the right direction. He made a lasting impact in my life and showed me what it means to be a true man of Christ. It was Shaun who helped me drop the tough-guy act I had displayed over a number of years and become the man Jesus Christ wants me to be.





FOCUS GREEK AT A GLANCE

- 59 FOCUS campuses using FOCUS Greek resources
- 118 FOCUS staff doing some form of Greek outreach



TRANSFORMING LIVES ON CAMPUS

BY HANNAH GRANT

Like so many of my peers, despite my Catholic upbringing, I partied hard in high school and planned to carry out that lifestyle into college. It wasn't so much that I didn't care about my Catholic faith as much as it was that I didn't know how to apply it to my everyday life. I didn't understand why it mattered or how it related to my life or those around me. At the end of the day, it all just seemed so culturally irrelevant.

THROUGH THEIR EXAMPLE, OVER TIME I BEGAN TO SEE THE CHURCH AS A GUIDE TO TRUE AND LASTING HAPPINESS.

Soon after starting my freshman year, I joined a sorority on campus. However, by the grace of God, my freshman dorm room was also in the Newman Center housing on campus. My roommates were also in sororities but these girls, now some of my closest friends, were different. It was clear right away that they were deeply committed to Jesus Christ and the Catholic faith they were brought up with. Through their friendship and frequent late night conversations, I began to question the way I had been living.

My friends helped me to see the misperceptions of what I thought the Catholic Church was all about – a list of rules and

do's and don'ts. Through their example, over time I began to see the Church as a guide to true and lasting happiness.

It's not easy to live out your faith in a sorority on a large, secular campus. But because of the relationships that FOCUS missionaries have fostered with me, my faith and soul are thriving. I'm now leading a Bible study in my sorority, helping others find true fulfillment, peace and purpose through Christ.



Retreat speaker Jena McFadden in a powerful moment with a college student in FOCUS Greek

**GOD USED FOCUS GREEK TO HELP ME FALL IN LOVE WITH THE CATHOLIC FAITH.
I'M PROUD TO BE CATHOLIC NOW AND WANT TO SHARE IT WITH THE WORLD.**

—JUSTIN, AUBURN UNIVERSITY

SLS14

FOCUS Student Leadership Summit
January 3-7, 2014 • Dallas, TX

SLS14.COM

*Launched
Into
Mission*





STUDENT LEADERSHIP SUMMIT 2014

The Student Leadership Summit, better known as SLS, is a large group event FOCUS hosts every other year in order to take more committed college student leaders to the next level in all aspects of their Christian leadership and discipleship. Since FOCUS is committed to “making disciples” and not merely converts, we brought nearly 1,000 college students to Dallas, Texas, to experience five days of transformational learning in order to truly “teach teachers how to teach.”

After receiving hands-on, practical training, the students were given opportunities to share and teach what they learned with others. The results had an immediate impact on the college campus as we saw a 61% increase in the number of student leaders inviting others in Bible studies.



FOCUS - The Fellowship of Catholic University Students  University

 Liked 

 Following

Timeline

About

SEEK2015 Blog Contest

Photos

More 

USING THE WEB TO REACH STUDENTS AROUND THE WORLD

BY KEVIN COTTER

FOCUS' core mission to reach college students on campus through evangelization, Bible studies, and discipleship will always remain the same. But the internet provides a channel to reach, equip, and coach students around the country.

As Pope Francis has said, "Use modern technologies and social networks in such a way as to reveal a presence that listens, converses and encourages."

FOCUS' Digital Campus is at the forefront of our outreach online. The Digital Campus coaches and equips students on non-FOCUS campuses to live out FOCUS' mission. A group of missionaries uses online video conferencing to coach students to reach out

to their peers, lead Bible studies, and disciple others on their campuses. These students on non-FOCUS campuses can also access all of FOCUS' resources for free at focusequip.org. Last year, the Digital Campus missionaries worked with 40 students leaders at 34 schools in 20 states.

In addition to the Digital Campus, FOCUS' online presence has grown over the last year through our blog, social media, and mobile applications. We continue to distribute free resources to our student leaders, alumni, and the general public through our website, while also building a growing engagement on Twitter and Facebook. Visits to our website increased more than 60%, and blog traffic grew 137% over the previous year.

One particular campaign, “Lentsanity,” was a game changer for us online. The campaign featured a mobile app that reminded folks around mealtime on Fridays to fast from meat. It was downloaded more than 14,000 times. In addition, our videos about the app, as well as our blog posts on Lent, saw an amazing number of shares on social media.

All of these efforts help to grow awareness about FOCUS and reach key growth goals of recruiting staff members and expanding to new campuses. We are looking forward to another exciting year on the web.



USE MODERN TECHNOLOGIES AND SOCIAL NETWORKS IN SUCH A WAY AS TO REVEAL A PRESENCE THAT LISTENS, CONVERSES AND ENCOURAGES.

—POPE FRANCIS



The Digital Campus works with students for one semester of intensive one-on-one training, followed by up to one semester of additional support through email and occasional chats, after which the students are launched.

DIGITAL CAMPUS AT A GLANCE

- 40 Student Leaders
- 34 Schools
- 20 States

LEVEL UP

The Digital Campus spearheaded the effort to bring regular, live, interactive content to those taking part or interested in the mission of FOCUS. It began as an idea to better serve our students and morphed into a monthly live event open to everyone. The Digital Campus produced seven episodes this year.

TOPICS COVERED

Advent, Bad Philosophies, Marriage, Masculine Genius, Summer Break, Time Management, Virtue



“By meeting the person of Jesus Christ through the organization of FOCUS, I am continually encouraged by the Holy Spirit to be a saint within the working world. FOCUS allowed me to form a daily relationship with the Lord while teaching me the vision, tools, and confidence to bring Jesus into the hospital where I am working.”

KELSEY BOSWORTH
FOCUS Student Leader
Occupational Therapy Student



“FOCUS helped me build a foundation for a life in Christ. I was spiritually nourished and intellectually prepared to live and defend my faith in the secular world.”

LINDSEY LYLE
FOCUS Student Leader
University of Colorado, Boulder
Physician Assistant
MD Anderson Cancer Center



“I met FOCUS missionary Meghan McCartney when I was a sophomore at the University of Pittsburgh. Through the tangible example and authentic friendship from her and the other missionaries, they helped restore my trust in God’s love and reintroduced me to the beauty of the Catholic Church. I thank God every day for the formation I received through FOCUS as it prepared my heart to receive His call to religious life.”

SR. ANGELINA MARIE
FOCUS Missionary, Temple University
Sisters of Life



FOCUS ALUMNI AT A GLANCE

- Started in 1998
- Total # of alumni: 14,581
- Staff alumni: 581
- Religious vocation decisions: 495

“One of my favorite verses is Hosea 2:14: ‘Behold, I will allure her, and bring her into the desert, and speak tenderly to her.’ Who knew that my desert experience would occur in Fargo, of all places! Yet it was there at North Dakota State University, where I served my first year as a FOCUS missionary, in the quiet solitude of the campus chapel, that I grew in my devotion to the contemplative life. Eventually, those words of the Lord drew me to give my life in service to Christ and the Church in the Holy Priesthood.”



FR. NATHAN GOEBEL

FOCUS Missionary, Denver University
Priest, Archdiocese of Denver



“FOCUS is unlike any other ‘school of evangelization’ I know. More than knowing Christ or being Christ for my friend and neighbor, FOCUS has taught me to encounter Christ in every person I meet. Now, while serving the Archdiocese of New York, I even more fully appreciate the paradigm FOCUS has established for all areas of ministry, from campus ministry to family life ministry. To succeed in evangelization, we must become a Church of missionary disciples.”

CHRIS ORAVETZ

FOCUS Student, United States Air Force Academy
Dir., University Apostolate/Campus Ministry, Archdiocese of New York
Assistant Dir., Family Life/Respect Life Office, Archdiocese of New York

**BY 2022, FOCUS WILL LAUNCH OVER
75,000 ALUMNI INTO AMERICA'S 17,400
CATHOLIC PARISHES.**

INTRODUCING

OUR

NEW



Please pray for our missionaries serving on
the front lines of the New Evangelization.

2014 – 2015

STAFF





EAST REGION

- Connecticut
- District of Columbia
- Maryland
- Massachusetts
- New Jersey
- New York
- Virginia
- Pennsylvania
- Maine
- Rhode Island
- Vermont

CONNECTICUT

UNIVERSITY OF CONNECTICUT



**Steven
DiMassimo**



**Brad
Endres**



**Amy
Janicki**



**Mary
Vander Woude**

WESTERN CONNECTICUT STATE UNIVERSITY



**Ambria
Martin**



**Carla
Oliver**

UNITED STATES COAST GUARD ACADEMY



**David
Hickson**



**Timothy
Goodwin**



**Paola
Pena-Rojas**



**Mimi
Ilardi**

DISTRICT OF COLUMBIA

GEORGE WASHINGTON UNIVERSITY



**Sarah Jane
Leder**



**Jim
Beatty**



**Becca
Brown**

MARYLAND

MOUNT SAINT MARY'S UNIVERSITY



**Megan
Elliot**



**Darrin
Schultz**



**Jenna
Lewis**



**Kyle
Ambrose**



**Veronica
Halbur**

U.S. NAVAL ACADEMY



**Victoria
Allison**



**Sean
O'Mahoney**

UNIVERSITY OF MARYLAND



**Mary
Manion**



**Corey
Kieffer**



**Mary
Linn**



**Paul
Moyer**



**Ashlyn
Dunn**



**Jennifer
Wukawitz**



**Paul
Nitekiewicz**



prayerful

CAMPUS MAP - EAST REGION

MASSACHUSETTS

BOSTON UNIVERSITY



Erica Johnson



Wesley Woods



Jonathon Baggett



Sarah Spencer

HARVARD UNIVERSITY



Michael Selenski



Eric Maschue



Federica Wade



Katie Hillgrove

MASSACHUSETTS INSTITUTE OF TECHNOLOGY



Tricia Lester



Griffin McHaffie



Megan Fountain



Mike Gearing

NEW JERSEY

RAMAPO COLLEGE



Mike Antonacci



Steph Spinelli



Steven Piorkowski



Marienicole Nowak

SETON HALL UNIVERSITY



Shaun Clyncke



Deirdre Gaughan



James Hamilton



Jennifer Wade



Chelsey Young

MONTCLAIR STATE UNIVERSITY



Kristin Laylock



Mike Cassell



Christopher Goulet



Kerry Froh

FAIRLEIGH DICKINSON/ DREW UNIVERSITY



Anna Fata



Pierce O'Connor



Eric Munoz



Kathryn Dugan

NEW YORK

COLUMBIA UNIVERSITY



**Niru
De Silva**



Emma
Dickinson



Joseph
Austin



Judy
Beaudoin

NEW YORK UNIVERSITY



**Pat
Dunford**



Frederick
Lothers



Sonia
Tompkins



Emily
Martinez

VIRGINIA

GEORGE MASON UNIVERSITY



**Carrie
Wagner**



Roxio
Roman



Daniel
Carmichael



Arragon
Perrone



Maria
McDonough



Ninoska
Moratin

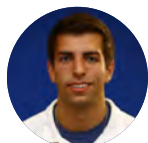


Anthony
Cirillo

JAMES MADISON UNIVERSITY



**Susie
Maurer**



Steve
Ernst



Emmanuel
Carreno-Garcia



Emily
Langan

UNIVERSITY OF MARY WASHINGTON



**Richard
Girardin**



Katrina
Oteyza



Nicholas
Grevas



Victoria
Lussier

UNIVERSITY OF VIRGINIA



**Brenda
Harter**



Nathaniel
AuYeung



Danietta
Charles



Joey
Gruenwald

PENNSYLVANIA

TEMPLE UNIVERSITY



**Vince
Sartori**



Lindsey
Shrefler



Mike
Dill



Lauren
Brown

CAMPUS MAP - EAST REGION

MAINE

UNIVERSITY OF MAINE, ORONO



**Thomas
Murphy**



Ellen
Klein



Samantha
Shepard



Steven
Cybulski

RHODE ISLAND

UNIVERSITY OF RHODE ISLAND



**Meagan
Kline**



Andrew
Vilcan



Maura
Donnelly



Justin
Harper

VERMONT

UNIVERSITY OF VERMONT



**Joseph
Moran**



Sarah
Mutchler



Martha
Evans



Rachael
Tvrdy



Eugene
Del Rosario

faithful





GREAT NORTH REGION

- Illinois
- Indiana
- Michigan

- Minnesota
- Ohio
- Iowa

- North Dakota
- South Dakota
- Wisconsin

CAMPUS MAP - GREAT NORTH REGION

ILLINOIS

NORTHWESTERN UNIVERSITY



**Derek
Lyssy**



Megan
Lawrence



Hannah
Kauffold



Jacob
Rosemeyer

UNIVERSITY OF ILLINOIS, CHICAGO



**Brian
Preisler**



Mary
Wagner



Zachary
Hayes



Rachel
Frichtl

UNIVERSITY OF ILLINOIS, URBANA-CHAMPAIGN



**Anne Marie
Brummer**



Mark
Burkholder



Teresa
Gwardys



Madison
Kinast



Jacob
Dungan

INDIANA

BALL STATE UNIVERSITY



**Jane
Voelker**



Kenny
Cavanaugh



Keaton
Leach



Annie
Rondone

INDIANA UNIVERSITY-PURDUE UNIVERSITY, INDIANAPOLIS



**Brooke
Yessa**



Savannah
Siegler



Buck
Teeter



Meghan
Gangestad



David
Jaramillo

authentic



MICHIGAN

CENTRAL MICHIGAN UNIVERSITY



**Mark
Pica**



Lindsey
Scheckelhoff



Kathryn
Houle



Donnie
Kuzma

EASTERN MICHIGAN UNIVERSITY



**Rachel
Holmes**



Kyle
Garretson



Mikayla
Koble



Jedidiah
Taubel

MICHIGAN TECHNOLOGICAL INSTITUTE



**Matthew
Koczur**



Richard
Fitzpatrick



Amy
Surmont



Maria
Rausch

MINNESOTA

MINNESOTA STATE UNIVERSITY, MANKATO



**Phil
Stone**



Matt
Leen



Catie
Bettendorf



Anna
Vanyo

ST. JOHN'S UNIVERSITY



**Ismael
Rodriguez**



Nick
Haiar

UNIVERSITY OF MINNESOTA, DULUTH



**Joseph
Richards**



Ben
Berning



Rosalin
Schlosser



Bailey
Brazier

WINONA STATE UNIVERSITY



**AJ
Garcia**



Jodi
Barth



Ryan
Paukert



Jessy
Kirkwood

OHIO

WRIGHT STATE UNIVERSITY



**Rachel
Rock**



Rebecca
Mumma

CAMPUS MAP - GREAT NORTH REGION

IOWA

DRAKE UNIVERSITY



**Heather
Priore**



**Kari
Pelzel**



**Jonathan
Clark**



**Brandon
Miranda**

LORAS COLLEGE



**Craig
Novak**



**Molly
Schommer**



**Mary
Vercollone**



**John
Prezgia**

NORTH DAKOTA

NORTH DAKOTA STATE UNIVERSITY, FARGO



**Jonathon
Spaid**



**Clare
Schumaker**



**Mathew
Wuebben**



**Ashley
Haiar**

UNIVERSITY OF MARY



**Alison
Wanner**



**Cullen
Gibbons**



**Theresa
Gibbons**



**Shane
Van Diest**

UNIVERSITY OF NORTH DAKOTA, GRAND FORKS



**Luke
Hellwig**



**Brendon
Pond**



**Mikayla
Pond**



**Becky
Jarding**



passionate

SOUTH DAKOTA

SOUTH DAKOTA STATE UNIVERSITY



**Andrew
Tomsche**



Sean
Zimprich



Kaitlyn
Reindel



Erika
Magnusson

UNIVERSITY OF SOUTH DAKOTA



**Anthony
Menke**



Tessa
Graybill



Elli
Fugate



Teresa
Nuar



Nolan
Schmidt

WISCONSIN

UNIVERSITY OF WISCONSIN, LA CROSSE



**Travis
Todd**



Megan
Swanson



Kevin
Decker



Desirae
Wieseler

UNIVERSITY OF WISCONSIN, PLATTEVILLE



**Jonathan
Sanchez-Hidalgo**



Zoe
Houle



Kelly
Rosborough

UNIVERSITY OF WISCONSIN, MADISON



**Tyler
Degen**



Lauren
Erickson



Maria
DeLuca



Sam
Stropes



Stephanie
Twedt



Justin
Telthorst



SOUTHEAST REGION

- Alabama
- Florida
- Georgia
- Kentucky
- North Carolina
- Tennessee

ALABAMA

AUBURN UNIVERSITY



Linda Moorhead



Drew Hines



Elizabeth Korus



William Jarvis

TROY UNIVERSITY



Sarah Vielma



Megan Rhodes

UNIVERSITY OF SOUTH ALABAMA, MOBILE



Justin Manion



Ben O'Neill



Emily Henke



Kara Bekebrede

UNIVERSITY OF ALABAMA, BIRMINGHAM



Kelsey Gaines



Frances Popp

FLORIDA

AVE MARIA UNIVERSITY



Corinne Riley



Tom Mullen



Jason Feeny



Melia Korbe

UNIVERSITY OF NORTH FLORIDA



Rachel Kauffold



Kayla Yelle



Grant Daly

FLORIDA ATLANTIC UNIVERSITY



Jeffrey Traughber



Abby Chapman



Jenn Stenzel



Kevin Sierra

UNIVERSITY OF FLORIDA



James Dunnigan



Afton Caterina



Christopher Baker



Katelyn Miller

CAMPUS MAP - SOUTHEAST REGION

GEORGIA

GEORGIA INSTITUTE OF TECHNOLOGY



**Veronica
Ybarra**



Deidre
Merrill



Daniel
Taylor



Alex
Carroll

GEORGIA COLLEGE AND STATE UNIVERSITY



**Martha
Griswold**



Ashley
Kovaleski

GEORGIA SOUTHERN UNIVERSITY



**Gregory
Schmidt**



Katie
Stark



Edgar
Cabrera



Brooke
Maryniak

KENTUCKY

MURRAY STATE UNIVERSITY



**Zachary
Krueger**



Alli
Griffin



Becca
Zander



Logan
Hepp

UNIVERSITY OF KENTUCKY



**Mark
Joseph**



Stephanie
Shipley



Amy
Joseph



David
West

NORTH CAROLINA

BELMONT ABBEY COLLEGE



**Jonathan
Smith**



Melanie
Miller



Brendan
Niklason



Jamie
Reed

TENNESSEE

UNIVERSITY OF TENNESSEE, KNOXVILLE



Andrea Francois



Jake Leins



Kelsey Ludvik



Dom Price

VANDERBILT UNIVERSITY



Timothy Thomas



Samantha Drapac



Jessica Lauer



Eric Bishop



welcoming



SOUTHERN PLAINS REGION

- Kansas
- Louisiana
- Missouri
- Oklahoma
- Texas

KANSAS

BENEDICTINE COLLEGE



Aaron Lofy



Meagan Gitchell



Michael Mollman



Monica Ramon



Sam Pitre



Elyse Cunningham



Rebekah Alva



Stephen Kesten



Kaitlin Gilday

UNIVERSITY OF KANSAS



Zachary McDermott



Lauren Schulte



Michael Schattle



Hannah Krick

LOUISIANA

TULANE UNIVERSITY



Eric James Van Matre



Tyler Weber



Sarah Quintanilla



Megan Isbell

UNIVERSITY OF LOUISIANA, LAFAYETTE



Mychal Augustine



Nicole Galvan



Sean Flack



Allison McCormick

relevant



CAMPUS MAP - SOUTHERN PLAINS REGION

MISSOURI

MISSOURI STATE UNIVERSITY, SPRINGFIELD



**Evan
Woolsoncroft**



Taryn
Dennis



Sarah
White



Trey
Chapa

NORTHWEST MISSOURI STATE UNIVERSITY



**Mike
Huelsing**



Jocelyn
Gosman



Anne
Crouch



Cody
Moore

SOUTHEAST MISSOURI STATE UNIVERSITY



**Maria
Crippen**



Matthew
Ketcham



Danielle
Kelker



Andy
Green

UNIVERSITY OF MISSOURI, COLUMBIA



**Levi
Rash**



Karianne
Bolduc



Claire
Courchane



Braxton
Callen

OKLAHOMA

OKLAHOMA STATE UNIVERSITY



**Ryan
Allen**



Sarah
Goulas



Katherine
Capadano



Alex
Sanchez

UNIVERSITY OF OKLAHOMA



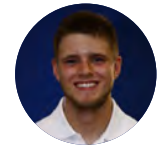
**Jennifer
Dinan**



Dorian
Arellano



Kaitlyn
Kelsch



Chris
Beck

UNIVERSITY OF TULSA



**Karlie
Brown**



Mary
Adam



Zoe
Myers



Jose
Reyes II



Greg
Shuler

TEXAS

BAYLOR UNIVERSITY



Adam Bremerkamp



Erin Corbett



Ana Perez



Chris Tasler

STEPHEN F AUSTIN STATE UNIVERSITY



Colin Slattery



Hannah Philpot



Nathaniel Deal



Danielle Duplechain

TEXAS A&M UNIVERSITY



John Merkle



Brock Martin



Missy Brassie



Meredith Hale

TEXAS STATE UNIVERSITY



Andrew Nistler



Brock Helfrich



Sarah Renard



Morgan Rolfes

UNIVERSITY OF NORTH TEXAS



Dani Patterson



Kyle Hanson



Jake Shonka



Kaitlyn Schulte

UNIVERSITY OF TEXAS, TYLER



Dain Finney



Meghan Mueller

UNIVERSITY OF TEXAS, AUSTIN



Tina Sanchez



Margaret Beasley



Ben Domingue



Madelin West



Geoffrey Calvert



WEST REGION

- Arizona
- California
- Colorado

- Ohio
- Nebraska
- Pennsylvania

ARIZONA

NORTHERN ARIZONA UNIVERSITY



Andrew Graupmann



Sarra Stanley



Katie Bandy



Karl Eby

ARIZONA STATE UNIVERSITY



Craig Koenig



David Cargill



Laura Foley



Elizabeth Whitton

CALIFORNIA

SAN DIEGO STATE UNIVERSITY



Andrew Dennis



John Boujikian



Jenna Koch



Dezirae Saldana

CALIFORNIA STATE UNIVERSITY, FULLERTON



Kylie Schaeffer Price



Steven Lewis



Lesley Wharton

UNIVERSITY OF CALIFORNIA, BERKELEY



Leanne Tracy



Caitlin Marmie



John Wojtasek



Maya Neam



Carlos Garcia

UNIVERSITY OF CALIFORNIA, SANTA BARBARA



Jess Kunz



Patrick Dancel



Mike Smith



Schyler York

UNIVERSITY OF SOUTHERN CALIFORNIA



Emily German



Tanelle Berard



Daniel Zink



John Potts

CAMPUS MAP - WEST REGION

COLORADO

COLORADO STATE UNIVERSITY



**TJ
Bench**



Sam
Breiten



Christina
Wirth



Devon
Kathol



Marcus
Vargas

COLORADO SHOOLOF MINES



**Misio
Wynar**



Emma
Heckman



Matt J.
Bowen

UNIVERSITY OF COLORADO, BOULDER



**Josh
Santo**



Ann
O'Brien



Calvin
Mueller



Shelby
Randel



Diana
Lopez

UNIVERSITY OF NORTHERN COLORADO



**Cari
Devlin**



Brian
Stai



Rachel
Kleinschmit



Michael
Lynch



Stephany
Anderson

OHIO

FRANCISCAN UNIVERSITY OF STEUBENVILLE



**Luke
Oestman**



Hannah
Brehm



Robert
Cargill



Emma
Schopp

loving



NEBRASKA

UNIVERSITY OF NEBRASKA, LINCOLN



JohnMarc Skoch



Ashley Montag



Jackie Fischer



Kendra Wurdeman



Seth Weidel

WAYNE STATE COLLEGE



Alex Pandolfo



Rachael Rogers



Adam Worm



Logan Burda



Megan Parker



Carter Hawkins



Jennifer Risper



Elizabeth Connealy



Benjamin Kranda

UNIVERSITY OF NEBRASKA, OMAHA



Adam Ybarra



Jamie Quinlan



Taylor Gruber



Brian Couri



Bryan Metcalf

PENNSYLVANIA

CARNEGIE MELLON UNIVERSITY



Joey Gruber



Rachel Foley



Amber Fessler



Keith Gatzke

UNIVERSITY OF PITTSBURGH



Matthew Keeny



Lindsay Butkus



Kathryn Showalter



Josh Fatzinger

CAMPUS INTERNS (ON CAMPUS SPRING 2015)



Jeffrey
Slattery



Sean
Tomko



Liz
Langan



Andrew
Furphy



Katie
Cionci



Michael
Carroll



Terry
Bell



Naomi
Reeh



Jessica
Touchet



Tyler
Golden



Krystal
Goodale



Paige
Ellensohn



Mike
Kreamske



Brendan
de Padua



Mary
Caillouet



Maemie
Donnelly



Jule
Coppa



Jeremy
Lobenberg



Dave
Frulla



Anne
Margareth
Closa



DENVER SUPPORT CENTER

DENVER SUPPORT CENTER

SOUTHEAST



Andy Day



Melissa Chang



Tyler Rosser



Chris Schilmoeller

DIGITAL CAMPUS



Bryan Wilburn



Melissa Keating

GREAT NORTH



Mark Bartek



Mary Grode



Dan Krebsbach



Matt Marcheschi



Paul Wilburn



Francesca O'Loughin



Ryan Noll

SOUTHERN PLAINS



Sam Mazzarelli



Kelsey Bob



Marcus Schoch



Shannon Zurcher



Drew Maly



Megan McDermott

WEST



Jared Smyth



Cindy O'Boyle



Jim Jansen



Jeremy Cassidy



Steve Pries

EAST



Nathan Stanley



Celine Casals



Colleen Zbiegien



Brenda True



Tom Bruner



Lauren Garcia



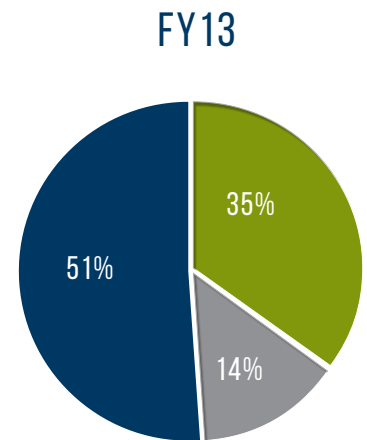
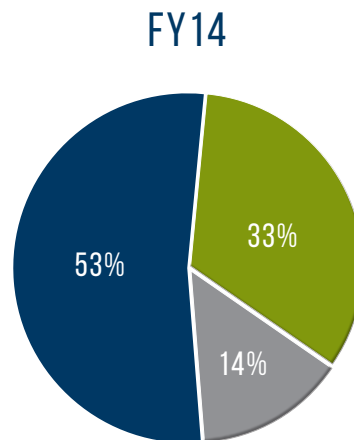
Sam Kelley

FINANCIALS

FISCAL YEAR ENDING:	5/31/14	5/31/13
Campus Revenue	\$ 27,784,949	\$ 24,463,731
Conference Revenue	\$ 1,006,640	\$ 2,341,947
Missions Revenue	\$ 1,581,856	\$ 853,350
Total Revenue	\$ 30,373,445	\$ 27,659,028
Campus Expense	\$ 26,101,463	\$ 23,557,805
Conference Expense	\$ 955,118	\$ 2,277,234
Missions Expense	\$ 1,289,061	\$ 1,005,597
Total Expense	\$ 28,345,642	\$ 26,840,636
Total Change in Net Assets	\$ 2,027,803	\$ 818,392
Active Benefactors	60,934	51,628

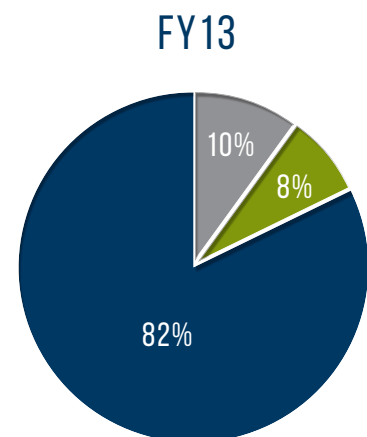
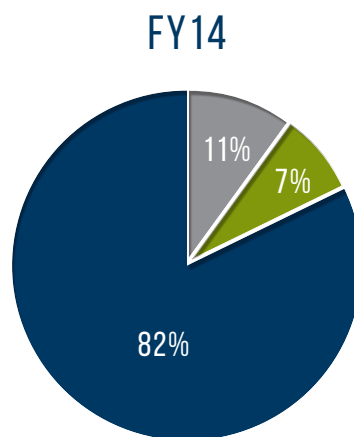
SOURCES OF CASH RECEIVED

- Support Team Contributions
- Campus Fee
- Other General Support



OPERATING EXPENSES

- Program Services
- Fundraising Expenses
- Administrative Expenses



FOCUS IS MOVING THE NEEDLE IN A MANNER THAT WILL CHANGE THE SCENERY IN AMERICA FOREVER.

—JUSTIN DOYLE, PRINCIPAL, MODUS CONSULTING ENGINEERS

LAUNCHING COLLEGE STUDENTS INTO LIFELONG CATHOLIC MISSION



In FY14, 355 FOCUS missionaries and 3,500 student missionaries worked to build the next generation of leadership for the Church and society.

SPECIAL THANKS TO

Anonymous Donor (9)
Chiaroscuro Foundation
Creamer Family Foundation
Dan Murphy Foundation
Hercules Industries, Inc.
L.M. Sales Associates
Our Sunday Visitor, Inc.
Paul Breitbach Fund
Pema Foundation
Performance Services, Inc.
Perry Family Foundation
Schmitz Family Foundation
Sebonack Foundation
Serra International Foundation
Strake Foundation
The Burleigh Family Foundation
The Catholic Foundation of Northern Colorado

The Collar Family Foundation
The J. Christopher & Ann C. Donahue
Charitable Fund
The Lehrman Institute
The Peter Flanigan Family
The Saeman Family Foundation
Turicchi Family Foundation
Mrs. Carol F. AuClair
Mr. & Mrs. Robert and Cynthia Beers
Mr. Thomas J. Biagini
Mr. & Mrs. William and Donna Bradt
Mr. & Mrs. Frank and Cathy Brummer
Mr. & Mrs. Frederic H. Clark
Mr. & Mrs. Terry and Fran Combs
Mr. & Mrs. John and Patricia Connelly
Mr. & Mrs. Anthony and Christie de Nicola
Mr. William Dugan

Mr. William H. Dunn Sr.
Mr. & Mrs. David and Lisa Fischer
Mr. & Mrs. Charles and Ellen Jo Haas
Mr. & Mrs. John and Robin Hake
Barbara B. Henkels
Mr. & Mrs. Matthew and Meggie Kelly
Mr. & Mrs. Thomas and Margot Kyd
Mr. & Mrs. Donald F. Lamberti
Mr. & Mrs. Michael and Sharon Lawler
Deacon & Mrs. George A. Loegering
Mr. & Mrs. John and Mari Ann Martin
Mr. & Mrs. Michael and Rita Mooney
Mrs. Peggie Notarianni
Mr. & Mrs. Charlie and Mary Beth O'Reilly
Mr. & Mrs. Tom and Rhonda Peed
Mr. & Mrs. Steven and Melinda Roznowski
Mr. & Mrs. Timothy Thoman

10,000–24,999

Anonymous Donor (14)
Burpo Family Charitable Fund
Carrie Estelle Doheny Foundation
Casillas Foundation
Connelly Foundation
Dunn Family Foundation
Foundation for Youth Development
Helen Brach Foundation
LDI LeeHar Distributors, Inc.
Louise M. Davies Foundation
M & H Sanchez
Robertson Family Foundation
Saint Thomas More Catholic Parish,
Centennial, CO
Saint Thomas More Newman Center,
Mankato, MN
Schwab Charitable Fund
Sioux Chief Manufacturing
Stephen D. and Anne L. Dunn Charitable Fund
The Glen & Diane Meakem Foundation
The Humphreys Family Trust
The Longon Family Charitable Fund
The Moran Foundation
The Peter Flanigan Family
Tom & Glory Sullivan Foundation, Inc.

Mr. & Mrs. Thomas and Kelly Adamitis
Mr. & Mrs. John Ahern
Mr. Frederick Blasius
Mr. & Mrs. Scott and Susan Brown
Drs. Paul and Janine Carson
Mr. & Mrs. John and Nancy Cecconi
Mr. & Mrs. Jim and Jackie Davis
Mr. & Mrs. Patrick and Ellen Donlon
Mr. & Mrs. John and Lana Falke
Mr. Curt W. Fulcher
Mr. & Mrs. Steven and Beth Gex
Mr. Mark Hansen
Mr. Donald C. Harkins
Mr. & Mrs. John and Adeline Hines
Mr. & Mrs. Edward and Linda Janeczko Jr.
Mr. & Mrs. Paul and Barbara Jansen
Mr. Matthew Johnson
Mr. & Mrs. Sammy and Sally LaVergne
Ms. Mary L. Lewis
Mr. & Mrs. Tad and Betsy Lyle
Mrs. Virginia H. McCaskey
Mr. & Mrs. Casey McGlynn
Mr. & Mrs. Sherwood and Sandra
Middlebrooks III
Mr. & Mrs. John and Pat Miller

Mr. & Mrs. Eustace and Susanne Mita
Mr. & Mrs. Joseph and Jo Ellen Monahan
Mr. & Mrs. Patrick and Lisa Mooney
Mr. & Mrs. William and Kathy Mumma
Mr. & Mrs. William and Annette Newland
Dr. & Mrs. Patrick and Suzanne Padgett
Dr. & Mrs. James and Suzanne Pillen
Mr. & Mrs. James Rahm
Ms. Cathryn Rasmuson
Mr. Stanley J. Rogers
Ms. Judith Simon
Mr. & Mrs. Gary and Gayle Somers
Mr. & Mrs. Steven and Mary Spencer
Mr. & Mrs. Edward and Mary Stenger Jr.
Mr. & Mrs. Thomas and Glory Sullivan
Dr. Kevin Thomson
Mr. John M. Touns
Miss Kathleen A. Wacker
Mr. William E. Wagner II
Mr. & Mrs. Randy and Janet Waring
Fr. Anthony P. Wilwerding
Mrs. Ellen F. Wright
Mr. Michael Zappe
Dr. & Mrs. Peter and Kristin Zimmer

5,000–9,999

- Anonymous Donor (31)
- Baxter Holdings
- Bayou Home Care, LLC.
- Charlie & Mary Beth O'Reilly Family Foundation
- Christopher Rothschild Testamentary Trust
- Clear Staff, Inc.
- CoBank
- D & N Ross Family Foundation
- Drury Development Corporation
- Freddie Mac Employee Funds
- Harry S. and Isabel C. Cameron Foundation
- Knights of Columbus, Msgr. Helmann
Council No. 11280
- Microsoft Matching Gifts Program
- Our Lady of Perpetual Help Thrift Store
- Our Lady of Wisdom, San Marcos, TX
- Pershing
- Priester Foundation
- Raza Development Fund, Inc.
- Rosswood Foundation
- Saint Anthony Foundation
- Saint Elizabeth Ann Seton Catholic Church,
Keller, TX
- Saint James Catholic Church, Falls Church, VA
- Saint Joseph Parish, St. Charles, MO
- Saint Paul Chong Hasang, Harker Heights, TX
- Saint Vincent de Paul Catholic Church, Fort
Wayne, IN
- Serra Club of Milwaukee
- Seton Hall University
- Saint Bernardine Catholic Parish,
Woodland Hills, CA
- Saint John the Baptist Catholic Congregation,
Edgar, WI
- Saint Peter Catholic Church, Greeley, CO
- The James and Caroline Cloud Giving Fund
- The Robinson Foundation
- The Shaughnessy Family Foundation
- The Verc Charitable Gifts
- ZTYL Foundation
- Mr. John Adams
- Mr. & Mrs. Jamie and Beth Ann Apt
- Mr. & Mrs. Stephen and Elizabeth Austin
- Mr. & Mrs. Mike and Veronica Axelson
- Ms. Suzanne Bacheller
- Mrs. Julie Bannantine
- Mr. & Mrs. Charles and Fiona Barton
- Mr. Dean A. Beickelman
- Mrs. Marlene Benes
- Mr. & Mrs. Luke and Alice Benes
- Ms. Jennifer A. Bennett
- Mr. & Mrs. Alfred and Susan Bongers
- Mr. & Mrs. Pat and Robyn Brady
- Mr. & Mrs. Brent and Stacy Bruegging
- Mr. David Buckles
- Mr. & Mrs. Gene & Jan Buhman
- Drs. Matt and Amy Carrico
- Mr. & Mrs. Richard and Marilyn Ciccarone
- Mr. Peter Zorn & Mrs. Marsha Courchane
- Mr. Mark Courchane
- Dr. & Mrs. John and Debi Jo Crotty
- Mr. & Mrs. John and Susan Crowe
- Mr. & Mrs. Thomas and Rosa Cunningham
- Dr. Leonard M. Cyterski
- Mr. & Mrs. David and Teresa De Wolf
- Mr. Michael DeClerck
- Mr. & Mrs. Patty and Doug Degen
- Mr. & Mrs. Jay and Tammy Demetree Jr.
- Mr. & Mrs. Patrick and Mary Dirk
- Dr. & Mrs. Stephen and Sharon Doran
- Mr. & Mrs. Stephen and Anne Dunn
- Dr. & Mrs. Paul and Bernadette Esposito
- Mr. & Mrs. Michael and Karen Farguson
- Mr. & Mrs. Vincenzo and Rosa Farruggio
- Mr. & Mrs. Robert and Kimberly Floyd
- Mrs. Christine A. Foley
- Mr. & Mrs. Scott and Lisa Gabriel
- Mr. & Mrs. Juan and Belinda Garcia
- Mr. Efren V. M. Garcia
- Mr. & Mrs. Michael and Julie Gieger
- Mr. & Mrs. Pat and Patricia Girolamo
- Mr. & Mrs. Michael and Renee Gratz
- Mr. & Mrs. Eric and Patricia Grieshop
- Mr. James M. Gryzmala
- Mr. & Mrs. Ron and Doris Guenther
- Mr. & Mrs. Randy and Joni Hamson
- Mrs. Lois M. Harris
- Mr. & Mrs. Ed and Mary Hart
- Mr. John J. Henke
- Mr. & Mrs. Kevin and Hill Heringer
- Mr. & Mrs. Tom and Lisa Heule
- Mr. & Mrs. Clinton and Sarah Horinek
- Ms. Shirley A. Houglum
- Mr. & Mrs. Dave and Margie Hunter
- Mr. & Mrs. Dewey and Nancy Jacobs
- Ms. Lisa Johnson
- Mr. Jon E. Junkin
- Dr. Tina Kearney
- William and Sharon Keefe
- Mr. & Mrs. Daniel and Joyce Keller
- Mr. & Mrs. Sean and Kathryn Ketterick
- Mr. & Mrs. Craig and Medora Koenig
- Mr. & Mrs. Tom and Bonnie Koenning
- Mr. & Mrs. Bruce and Renee Koonce
- Mr. Bill Krahulik
- Mr. Kelly W. Kritsky
- Ms. Eleanor M. Kroetch
- Mrs. Alice Lewis
- Ms. Phyllis Lieb
- Mr. Jerome D. Loos
- Mr. & Mrs. Paul and Mary Colleen Lum Lung
- Dr. Matt Luttrell
- Mr. & Mrs. Frank and Patricia Lynch
- Mr. & Mrs. Daniel and Ann Manion
- Mr. & Mrs. Eric G. Mansfield Jr.
- Mr. & Mrs. Matt and Libby McCartney
- Mr. & Mrs. Kevin and Angela Medow
- Mr. Michael J. Metzger
- Mr. & Mrs. Mitch and Sarah Minarick
- Mr. & Mrs. Jim and Anne Minarick
- Ms. Amalia Morehead
- Ms. Anna B. Nauman
- Mr. Lloyd Noble II
- Fr. Jeff T. Norfolk
- Drs. Frank and Aime Nuar
- Mr. John Odgaard
- Mr. & Mrs. Mark and Dessany Oestman
- Mr. & Mrs. Curtis and Teresa Ollila
- Mr. & Mrs. Kevin and Loretta O'Reilly
- Mr. & Mrs. Dennis and Anne O'Rourke
- Mr. & Mrs. Lee and Venesa Pamuk
- Mr. & Mrs. John and Clare Pennington
- Ms. Deborah Peroutka
- Mr. Paul R. Perreault Sr.
- Mr. & Mrs. Leland and Sheila Phillips

WHY IT'S POSSIBLE

5,000—9,999

Dr. Richard Pichler
Mr. & Mrs. Daniel Polett
Mrs. Bette Poliquin
Mr. Ronald J. Polomsky
Phil and Connie Pratt
Mr. & Mrs. Christopher and Ann Quick
Mr. Jeffrey Reminga and Dr. Maria Marta Ferreyra
Mr. & Mrs. Patrick and Jeanne Respeliere
Mr. & Mrs. James and Barbara Rosser
Mr. Eugene E. Ryan Jr.
Mr. Christopher J. Saal
Mr. & Mrs. Mark and Meg Scharmer
Dr. & Mrs. Michael and Diane Schilmoeller
Mr. Daniel Schreck
Mr. & Mrs. Mark and Jane Schwartz
Mr. & Mrs. Scott and Cathy Seemann

Dr. & Mrs. William and Donna Shergy
Dr. & Mrs. Michael and Virginia Skoch
Mrs. Rebecca Snyder
Mr. & Mrs. David and Shannon Spargo
Mr. Scott Spethman
Mr. & Mrs. Bart and Becky Stephan
Mr. & Mrs. Michael and Anne Szostak
Mr. & Mrs. Frank and Kim Taylor
Mr. & Mrs. Paul and Janel Telthorst
Mr. & Mrs. Tom and Nancy Terryberry
Mr. & Mrs. Wilbur and Virginia Thesier
Drs. John and Rose Thomas
Mr. & Mrs. Mike and Bonnie Thomas
Mr. Thomas M. Tirpak
Mr. & Mrs. Timothy and Janet Todd
Mrs. Deanne C. Tracy
Ms. Jannet Vergara

Mr. Ricardo Villarreal
Deacon & Mrs. John and Barbara Volk
Ms. Alicia C. Voss
Mr. & Mrs. Christopher and Michelle Wagner
Ms. Elaine E. Wagner
Mr. Michael Webber
Mrs. Donna Weiner
Mr. & Mrs. J.T. and Christine Weis
Mr. & Mrs. Christopher and Julie White
Mr. & Mrs. David Wilburn
Mr. & Mrs. Dave and Susan Willingham
Mr. & Mrs. Pat and Theresa Wingen
Mr. & Mrs. Alan Wirth
Mr. & Mrs. Joseph and Megan Wurtz
Dr. Wayne F. Yakes
Mr. & Mrs. Gene and Sharon Zimmer

FOCUS LEGACY SOCIETY

Anonymous Donor (7)
Mrs. Cecilia M. Allen
Mrs. Marguerite F. Bennett
Mr. & Mrs. Kent and Jacqueline Bettale
Mr. Michael P. Blair
Mr. & Mrs. Pat and Robyn Brady
Mr. & Mrs. J. Paul and Frances Breitbach
Mr. & Mrs. Troy and Brenda Cannella
Mr. & Mrs. Jim and Caroline Cloud

Fr. James N. Dean
Mr. & Mrs. John and Lucy Flynn
Mr. William L. Geiger
Mr. & Mrs. Joshua and Elisabeth Gideon
Mr. & Mrs. Joe and Rebecca Hensler
Mr. & Mrs. James Jansen
Mr. & Mrs. John and Barbara Kaisersatt
Mr. & Mrs. Chris Kuetemeyer
Mr. and Mrs. Ray & Katherine LeBlanc

Mr. & Mrs. Curtis and Michaelann Martin
Fr. Robert Matya
Mr. & Mrs. Claude and Margaret Medina
Mr. & Mrs. Craig and Melissa Miller
Mr. John F. Murphy
Mr. & Mrs. Robert and June Pumford
Mr. & Mrs. Josh and Nikki Shasserre
Mr. Robert E. Simons
Mr. & Mrs. John and Barbara Zimmer



MAY 2014
Journey
TO THE HOLY LAND
WITH JEFF CAVINS AND CURTIS MARTIN

SPONSORED BY  FOCUS

In May 2014, Jeff Cavins and Curtis Martin led a group of 45 FOCUS benefactors and missionaries on a 9-day pilgrimage to the Holy Land. Walking in the footsteps of Christ truly brought the Gospels to life. Stay tuned for details on the 2016 FOCUS Pilgrimage!

“The FOCUS Holy Land pilgrimage was absolutely amazing! It was easy to see why FOCUS is transforming the lives of college students across the nation.”

—CURT FULCHER



Mark Collar
CHAIRMAN OF THE BOARD
Former President
P&G Pharmaceuticals



Msgr. John Cihak, S.T.D.
Official at the Congregation of
Bishops & Master of Ceremonies
to His Holiness, Pope Francis



Terry Combs
Founder and Former President
Integrated Airline Solutions



Fr. Robert Matya
Newman Center Chaplain at the
University of Nebraska, Lincoln



Alejandro Bermudez
Executive Director
Catholic News Agency



William Mumma
President
Becket Fund



Fred Clark
President
Pacific Equity Management



Joe Wurtz
Dean of Students
Benedictine College



Bill DeMucci
Founder and President
Titron Media Co. Ltd.



Dr. Edward Sri
Provost and Professor of Theology
Augustine Institute



Bill Newland
Owner
Hercules Industries, Inc.



Craig A. Miller
President
FOCUS



Curtis A. Martin
Founder and CEO
FOCUS

7000+ PRAYERFUL SOULS

50+ MOVING SPEAKERS

5 AMAZING DAYS

“It reignited the fire within me.”

SEEK 2015

“Jesus turned, and saw them following,
and said to them,

‘What do you seek?’”

JAN 1-5 | **NASHVILLE, TN**

SEE TRANSFORMATION. BE TRANSFORMED. REGISTER AT SEEK2015.COM.

HOPE – ONE LIFE, ONE FAMILY AT A TIME

Join others in this journey by putting FOCUS in your will or trust

"I believe the future of the church is young people. Whatever we can do to foster the faith among young people at a very critical time of their lives when they are apt to stray...that's crucial to the whole future of the Church."

—Current FOCUS Legacy Member



To leave a gift in your will or trust, please contact our Office of Planned Giving at 303.551.7413 or visit www.focus.org/mylegacy



Fellowship of Catholic University Students (FOCUS)

PO Box 18710 / Golden, CO 80402

Tax ID# 84-1522811

“AND WHAT YOU HEARD
FROM ME THROUGH MANY
WITNESSES ENTRUST TO
FAITHFUL PEOPLE WHO
WILL HAVE THE ABILITY TO
TEACH OTHERS AS WELL.”

2 TIMOTHY 2:2



PO BOX 18710 GOLDEN, CO 80402
(P) 303.962.5750 | (F) 303.565.5738

www.focus.org